

skypod LANTERN ROOF



QUOTE REQUEST FORM

Issue 10

PROCEDURE

To request a quote for a Skypod, fill out the quote request form and email to your roofing ownership contact.

If any alterations are required, please email back the quote we have provided highlighting the changes. **DO NOT** sign this. A new confirmation will be prepared for you to re-check and sign.

When you are happy that everything on the confirmation is exactly as required, sign it and email back to your Roofing Ownership contact. The signed confirmation constitutes your final approved order and the production paperwork is produced from this. Any alterations made after you have returned the signed confirmation may be subject to charges.

Conservatory roofs will be delivered in 4 working days from date of order. If you have requested a specific delivery date, every effort will be made to accommodate your needs and we will contact you in writing to confirm of any issues.



FRAME COLOURS

skypod



WHITE
White interior



ANTHRACITE GREY
White interior



ANTHRACITE GREY
Anthracite interior



MOONDUST GREY
White interior



ROSEWOOD
White interior



GOLDEN OAK
White interior



skypod plus (Subject to extra charge)



MATT BLACK
White interior



MATT BLACK
Black interior**



ANTHRACITE GREY
White interior



ANTHRACITE GREY
Grey interior*



WHITE
White interior

* Black and grey internal finishes on Skypod Plus are produced by a spraying process



GLASS COLOURS



BLUE



NEUTRAL



BRONZE

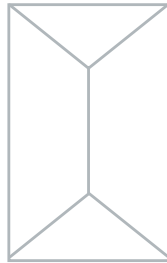


AQUA



CLEAR

SIZE & STYLE OPTIONS



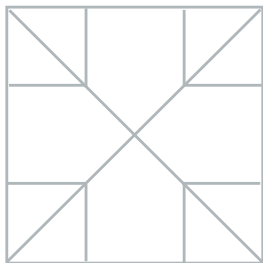
Up to 1.5m x 2.75m



Up to 1.5m x 7.45m



Up to 2.75m x 8.7m



Up to 2.75m x 2.75m



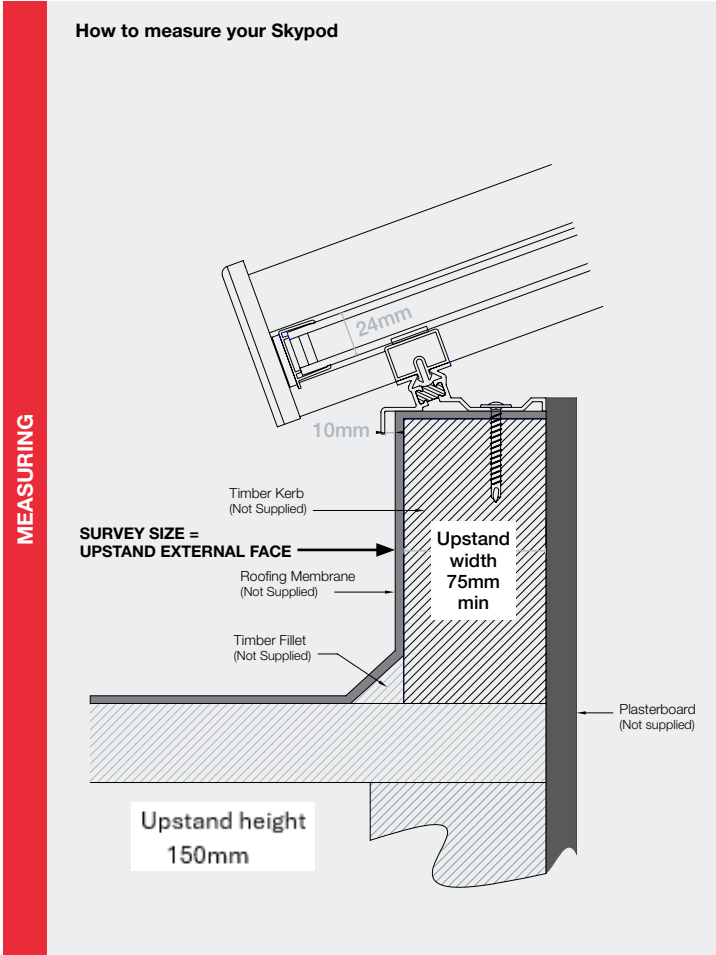
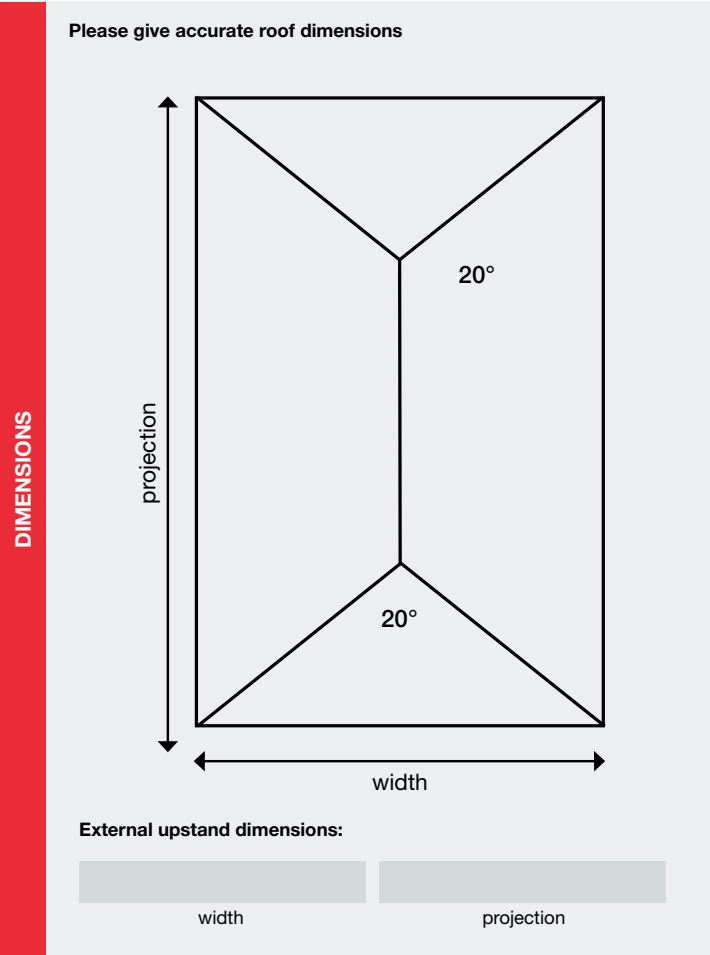
Up to 1.5m x 1.5m



Skypod and Skypod Plus available in 20° pitch.

Note: Design and number of rafters will vary dependent on size. All Skypod lantern roofs are made-to-order, and you will receive a design to sign-off before the item goes into production.

Customer	Roof reference name
Date requested	Is this <input type="checkbox"/> a rough survey for quoting <input type="checkbox"/> an accurate final roof survey



- FRAME COLOUR**
- skypod**
uPVC cappings
- White / White interior
 - Golden Oak / White interior
 - Rosewood / White interior
 - Moondust Grey / White interior
 - Anthracite Grey / White interior
 - Anthracite Grey / Anthracite interior
- skypod plus** ‡
Powder coated aluminium top cappings
- Matt Black / White interior
 - Matt Black / Black interior*
 - Anthracite Grey / White interior
 - Anthracite Grey / Grey interior*
 - White / White interior
- Exterior / Interior
- * Black and grey internal finishes on Skypod Plus are produced by a spraying process
- ‡Subject to extra charge for aluminium

- GLASS OPTIONS**
- | | |
|--|---|
| 1.2 U-Value | 1.0 U-Value† |
| Perfect Day: | Perfect Day: |
| <input type="checkbox"/> Super Blue | <input type="checkbox"/> Super Blue Eco Plus |
| <input type="checkbox"/> Super Neutral | <input type="checkbox"/> Super Neutral Eco Plus |
| <input type="checkbox"/> Super Bronze | <input type="checkbox"/> Super Bronze Eco Plus |
| <input type="checkbox"/> Super Aqua | <input type="checkbox"/> Super Aqua Eco Plus |
| <input type="checkbox"/> Super Clear | <input type="checkbox"/> Super Clear Eco Plus |
- †1.0 U-value at price premium

- ROOF VENTS**
- Manual roof vent
 - Brass coloured winder
 - Chrome coloured winder
 - Electric switch vent
 - Electric climate control vent & auto-vent controller
Available subject to design of roof
- NOTES**